



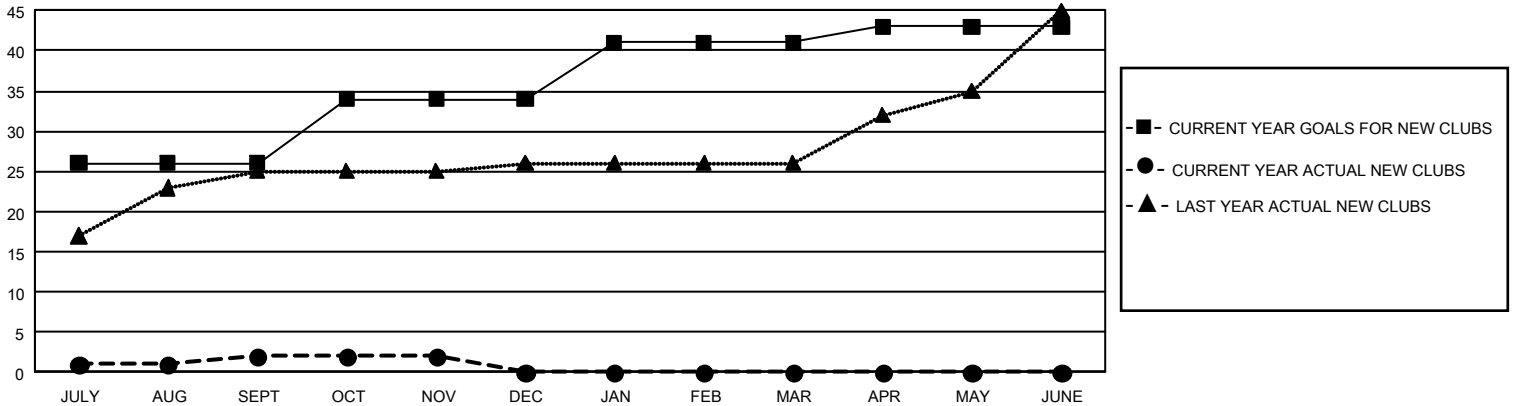
GMT Constitutional Area 6, Group L

GMT: OPEN

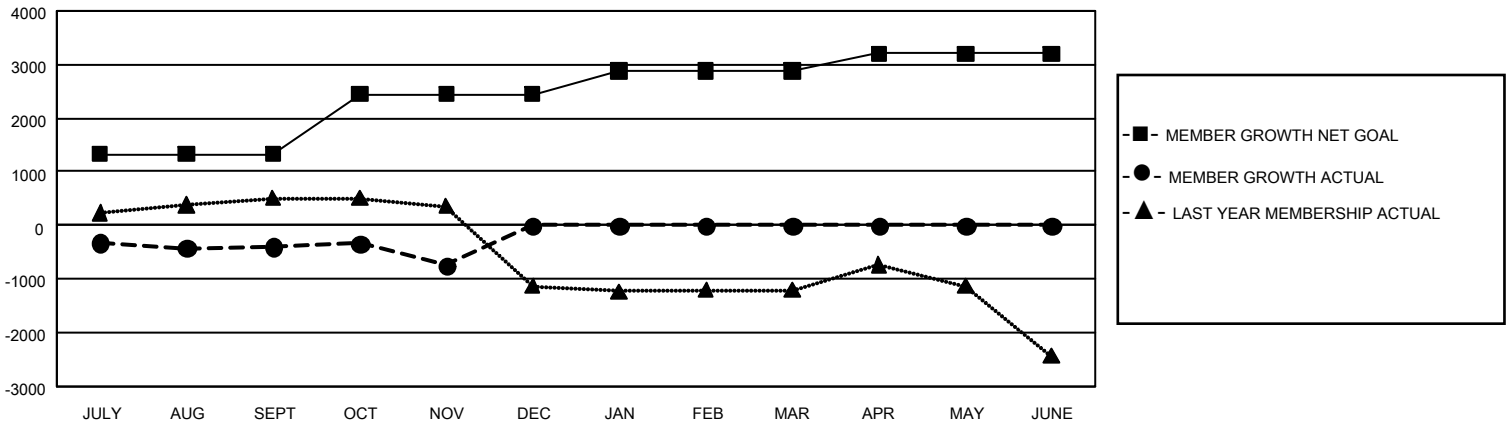
REPORT DOES NOT INCLUDE CLUBS IN UNDISTRICTED AREAS.

Clubs				Members			
RESULTS FOR 2019-2020				RESULTS FOR 2019-2020			
QUARTER	NEW CLUB GOAL	NEW CLUBS	DROPPED CLUBS	QUARTER	MEMBER GROWTH NET GOAL	MEMBER GROWTH ACTUAL	DROPPED MEMBERS ACTUAL (including transfers)
JULY/AUG/SEPT	78	2	2	JULY/AUG/SEPT	3,975	770	1,045
OCT/NOV/DEC	24	0	0	OCT/NOV/DEC	3,375	174	516
JAN/FEB/MAR	21	0	0	JAN/FEB/MAR	1,275	0	0
APR/MAY/JUNE	6	0	0	APR/MAY/JUNE	975	0	0

GOALS AND ACTUAL NEW CLUBS CUMULATIVE



GOALS AND ACTUAL MEMBERS CUMULATIVE



DROPPED CLUBS: 2	247 CLUBS OF 697 ADDED 1 OR MORE NEW MEMBERS	<u>GENDER DISTRIBUTION</u>	
<u>DROPPED MEMBERS</u>		MALE	24,177 (63.18%)
DECEASED	47	FEMALE	14,090 (36.82%)
CLUB CANCELLED	17	TOTAL FAMILY UNIT MEMBERS 27,159	
OTHER	1,501	FAMILY MEMBERS PAYING HALF DUES 17,282	
TOTAL	1,565		

[CLICK HERE FOR CUMULATIVE MEMBERSHIP DATA](#)